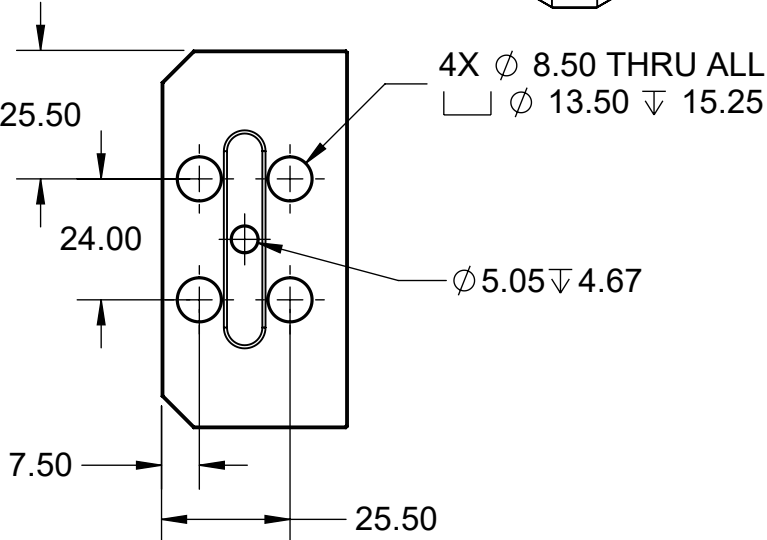
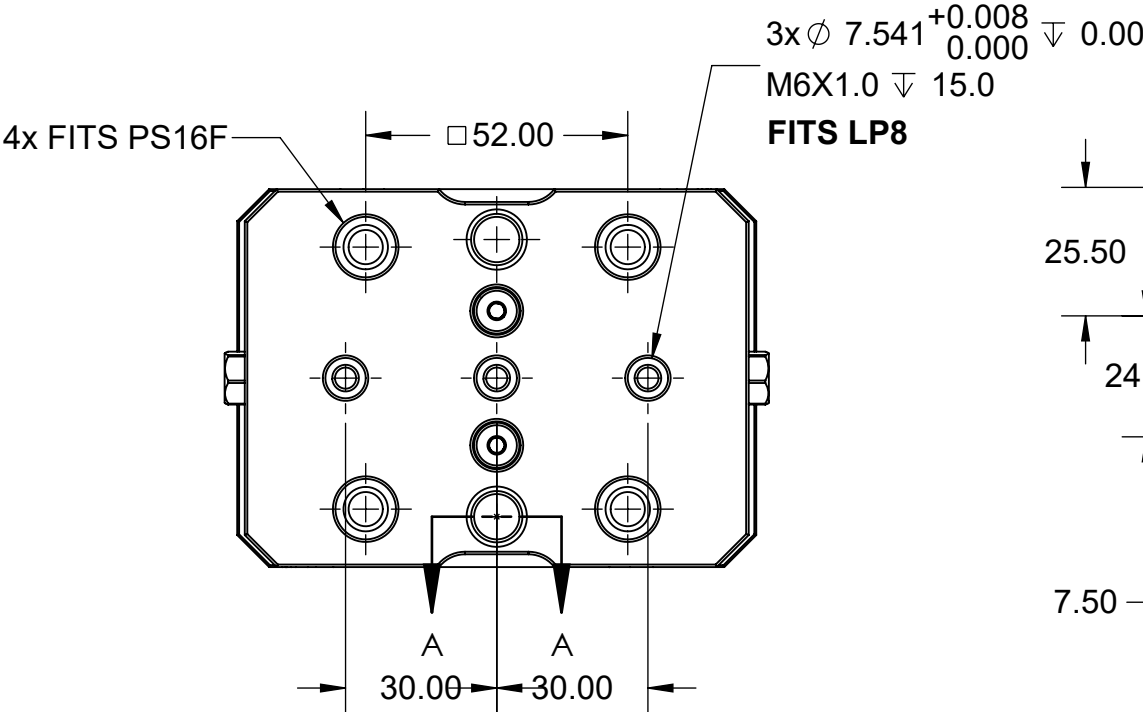
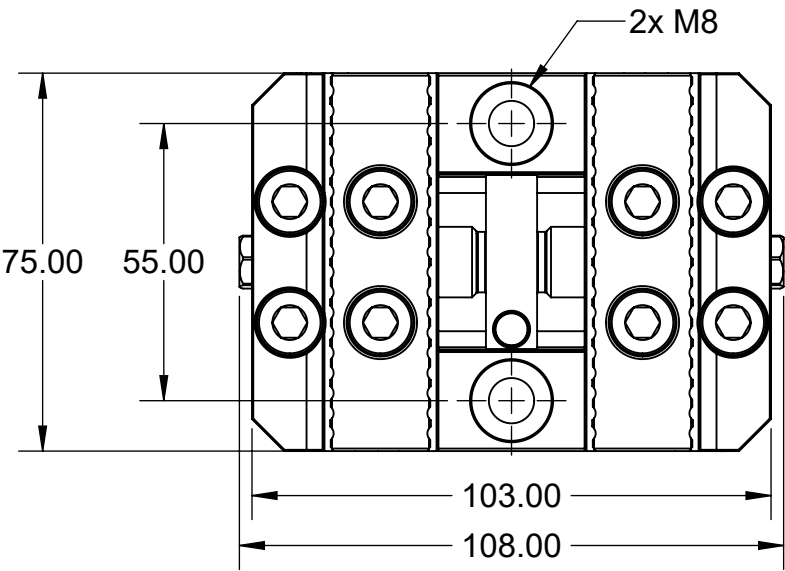
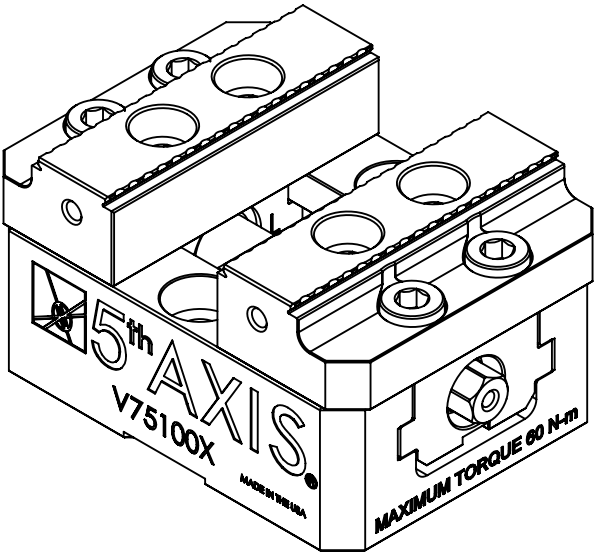


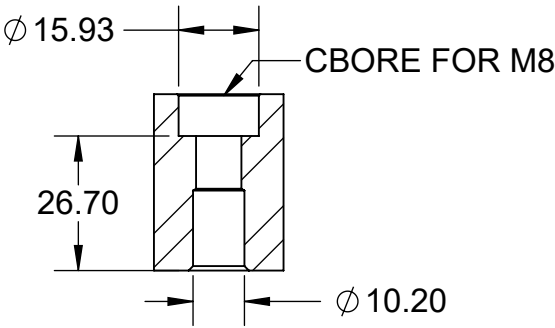
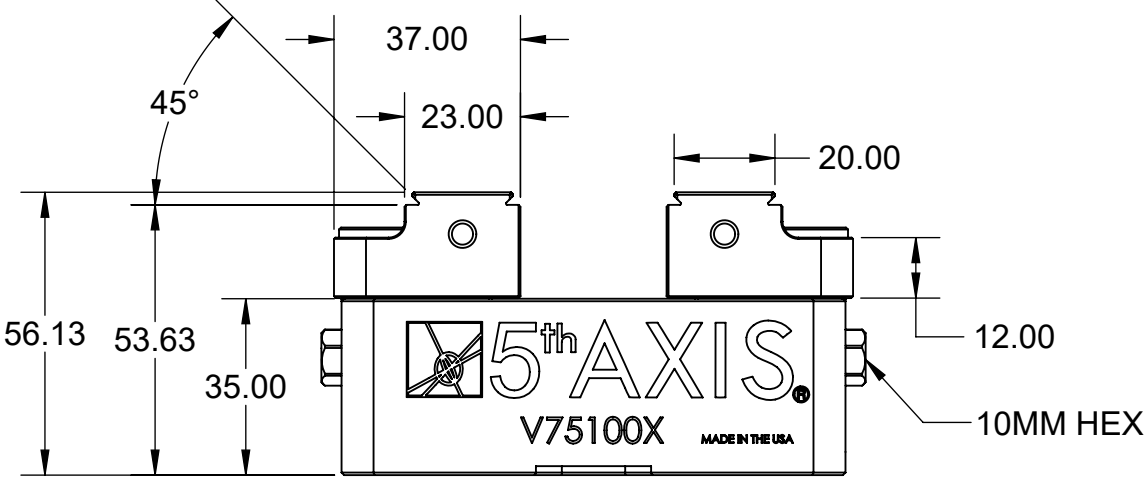
8 7 6 5 4 3 2 1

| TECHNICAL DATA | V75100X |
|-------------------------|-----------------|
| JAW LENGTH | 75MM |
| MAXIMUM CLAMPING FORCE | 13.5 kN @ 60 Nm |
| CLAMPING RANGE STANDARD | 0 - 40.3MM |
| CLAMPING RANGE REVERSED | 38.5 - 76.3MM |
| SELF-CENTERING ACCURACY | ±.0127MM |


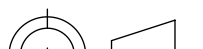
V75100X



JAW MOUNTING



SECTION A-A

| | | | | | |
|---|--|---|--|---|--|
| MILLIMETER | | TOLERANCES UNLESS OTHERWISE SPECIFIED | |  | |
| DRAWN IN ACCORDANCE WITH ASME Y14.5-2009 | | x ± 0.1 .xx ± 0.01 .x ± 0.05 .xxx ± 0.005 ANGULAR ± 0.5° | | DESCRIPTION | |
| WWW.5THAXIS.COM | | THIRD ANGLE PROJECTION | | 75MM X 100MM SELF-CENTERING VISE | |
| 7140 ENGINEER ROAD SAN DIEGO, CA 92111 | |  | | REV | |
| P (858) 505-0432 F (858) 505-9344 | | SIZE B | | PART NO. V75100X | |
| | | DO NOT SCALE DRAWING | | SCALE 2:3 | |
| | | | | WEIGHT: | |
| | | | | SHEET 1 OF 3 | |

D

C

B

A

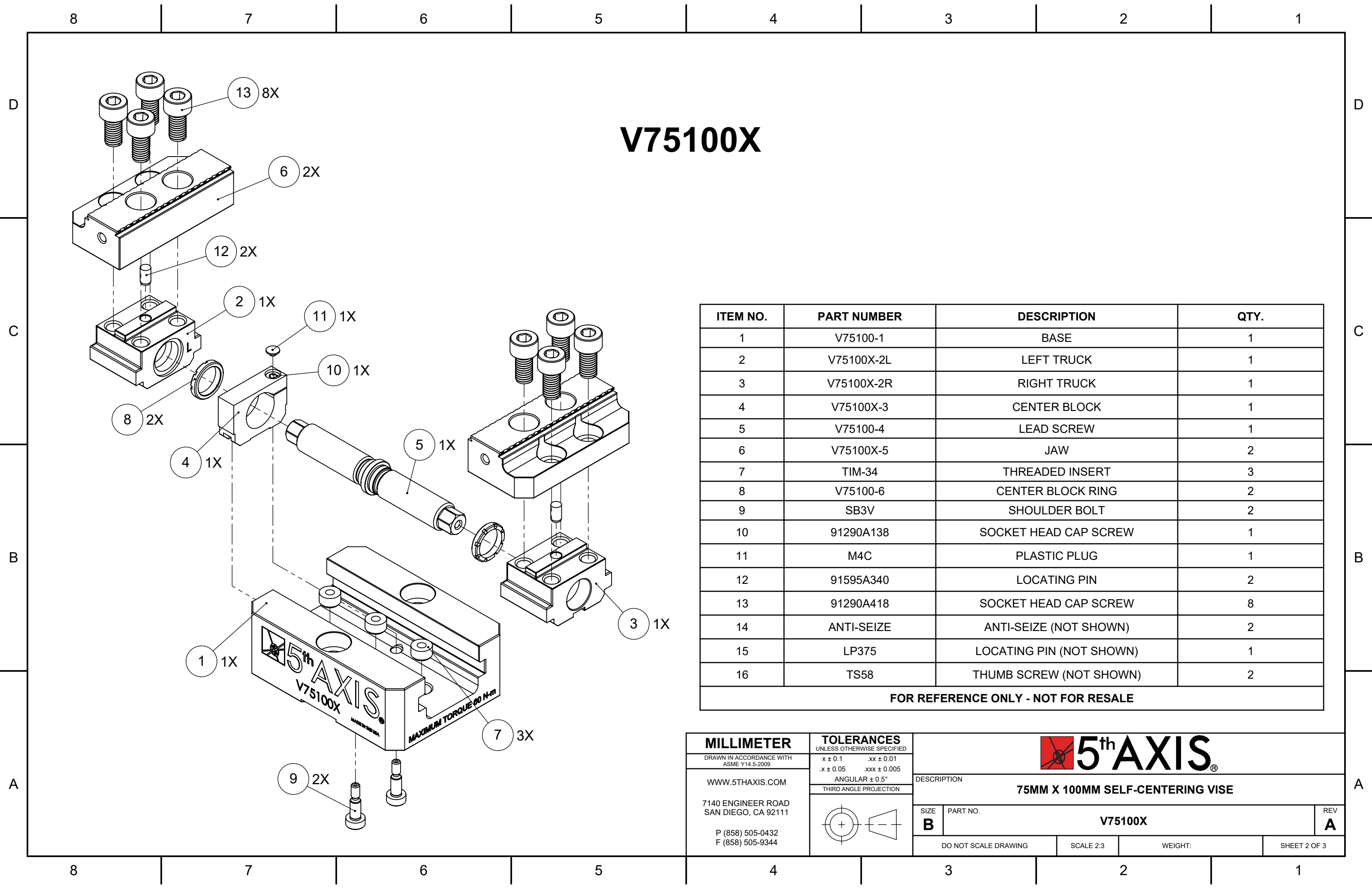
D

C

B

A

8 7 6 5 4 3 2 1



V75100X

| ITEM NO. | PART NUMBER | DESCRIPTION | QTY. |
|-------------------------------------|-------------|--------------------------|------|
| 1 | V75100-1 | BASE | 1 |
| 2 | V75100X-2L | LEFT TRUCK | 1 |
| 3 | V75100X-2R | RIGHT TRUCK | 1 |
| 4 | V75100X-3 | CENTER BLOCK | 1 |
| 5 | V75100-4 | LEAD SCREW | 1 |
| 6 | V75100X-5 | JAW | 2 |
| 7 | TIM-34 | THREADED INSERT | 3 |
| 8 | V75100-6 | CENTER BLOCK RING | 2 |
| 9 | SB3V | SHOULDER BOLT | 2 |
| 10 | 91290A138 | SOCKET HEAD CAP SCREW | 1 |
| 11 | M4C | PLASTIC PLUG | 1 |
| 12 | 91595A340 | LOCATING PIN | 2 |
| 13 | 91290A418 | SOCKET HEAD CAP SCREW | 8 |
| 14 | ANTI-SEIZE | ANTI-SEIZE (NOT SHOWN) | 2 |
| 15 | LP375 | LOCATING PIN (NOT SHOWN) | 1 |
| 16 | TS58 | THUMB SCREW (NOT SHOWN) | 2 |
| FOR REFERENCE ONLY - NOT FOR RESALE | | | |

MILLIMETER

DRAWN IN ACCORDANCE WITH
ASME Y14.5-2009

WWW.5THAXIS.COM

7140 ENGINEER ROAD
SAN DIEGO, CA 92111

P (858) 505-0432
F (858) 505-9344

TOLERANCES
UNLESS OTHERWISE SPECIFIED

x ± 0.1

.xx ± 0.01

.x ± 0.05

.xxx ± 0.005

ANGULAR ± 0.5°

THIRD ANGLE PROJECTION

DESCRIPTION

75MM X 100MM SELF-CENTERING VISE

SIZE

B

PART NO.

V75100X

REV

A

DO NOT SCALE DRAWING

SCALE 2:3

WEIGHT:

SHEET 2 OF 3